

Autumn Term

NEWSLETTER

Welcome To Briary Pre- School!

It has been very busy at pre-school, welcoming children back after the school holidays and settling in new children and their families. We like to keep you informed of what is going on at pre-school, we have a closed Facebook page for families of the children who attend which is updated with news and what we have been doing. This term we have been focusing on and ensuring the children's well being is our priority, supporting friendships, bonding children with their key person and routines and boundaries.

What's In This Autumn newsletter?

- Welcome
- Snack Donations
- Dummy's & Comforters
- Medication
- All about me & shoe boxes
- Belongings & Nappies
- Welly boots & Messy play
- Two year checks
- Family photo boards
- Book loaning library
- Chatty bears
- Festivals & Culture
- Upcoming Events
- Important Messages
- Half Term Week
- Uniform
- Opening Times
- Neighbourly- Aldi Donations
- Fees
- Phonenumber
- Tapestry
- Staff Team
- Term Dates

Snack Donations

As a charity we like to invite you to make donations of snack instead of providing individual snacks from home, we also want to avoid making a charge for snack like many other settings. We feel that children benefit from trying new foods and as a food champion setting, we are trying to limit the sugar intake of sugary snacks. We would love snack donations of, any fruit, bread, crumpets, , cream crackers, breadsticks, cheese, butter, sugar free jam.

As a charity your donations are much appreciated and the children love to talk about what they have bought in for snack to share, children will also have the opportunity to cut their portion or butter their toast.

Please ensure when donating snack, you do donate any items that contains nuts, including peanut butter, nut products, hazelnut spread & loose nuts or bars.



Dummy's and Comforters

You are welcome to bring in your child's dummy or a small comforter such as a muzzy or transition toy but please be mindful of Large items such as blankets which may trail and create a trip hazard. We do not encourage tablets to settle children. Please speak to your key person if you are unsure.

We will wean your child from their dummy in the settling and only use them when your child is upset.

Tips:

- A dummy may discourage your toddler from chatting with you.
- Take the dummy out when your child is awake or settled.
- Offer a comforter or try reading a story instead.

Medication

Please do not leave medication in your child's bag, please pass to Carol, Nic or Maria on arrival, we will complete a medication consent form with you. Please note we do not administer painkiller unless prescribed by a GP, only prescribed medication we are permitted to administer.



All about me's & shoe boxes!

Please can you return your "All about me's" and shoe boxes. We use these to gather as much information on your child's likes/ dislikes, experiences, fears and they help your key person get to know your child as best as they can. The shoe box you were given, please can you return so that we can use them if your child is wobbly or upset.

In your email welcome pack there is a fact sheet called "All in a Shoebox" to help you put it together with your child.



Belongings & Nappies

Please ensure all **lunchboxes** and **drink bottles** are labelled with your child's name on. Please be aware if your child has grapes or cocktail sausages in their lunch box, please make sure you cut them up, as this could cause a choking hazard. Thank you for your co-operation. **We are a nut free pre-school, all lunches from home need to be peanut and tree nut free & does not contain peanut butter, hazelnut spread or bars. We have a child attending with severe nut allergy and EpiPen, which can be fatal for the child if he ingests nuts or nut products.**

All belongings should be labelled clearly with your child's name on such as, coats, scarfs, gloves, hats, spare clothing, water bottles & lunch boxes.

What to provide each day in your child's bags: Please ensure you pack lots of spare clothes in your child's bags (Underwear, socks, tops, bottoms), nappies or pull ups (if applicable), wipes and nappy sacks.



Welly Boots & Messy Play

Please could you provide named wellies for your child to wear for messy play and wet weather play and we will keep these at the pre-school to wear when needed.

Messy play develops a child's creativity, sensory exploration, thinking skills, gross & fine motor skill development, with that in mind please be mindful of not sending your child in clothes that you do not want to get dirty. We encourage children to wear aprons and our waterproofs but sometimes children are adverse to wearing them and may walk away from an activity rather than wear an apron. We do of course teach children why they help keep them dry, and clean but we will not insist that a child wears one, we want to foster engagement and a love for sensory exploration. You can provide an oversized t-shirt (old adult one) for your child to wear for painting if they will not wear an apron.



Two Year Checks

For our two year olds you should have received a letter and questionnaire about your child's two year check. It is a statutory requirement for us to complete a two year check with you.

If you have any concerns about your child's development, please use the form to share your concerns. We may arrange an Integrated review meeting with your health visitor at the preschool to share concerns. Nic is our two year old advocate, please speak to Nic if you would like more information.

Family Photo Boards

Please could we kindly ask if you would provide or send via email to briarypreschool@btconnect.com a family photo. Each key group has a family board to celebrate each child's uniqueness and build the importance of family. These will be displayed in your child's key group room.

Please speak to your key person for more information.



Book Loaning Library

Each week from the beginning of October your child will bring home a book, once a week to share with you at home. Please then bring back the zippy wallet and they can choose another to bring home.

Please note a small charge will be made for lost or damaged books.



Chatty Bears

Your child will get the opportunity to bring home their key group bear to look after, please share your experiences with photos in the book provided.

A letter will be included with more information. Please look after the bear and the belongings and return to preschool the following week.

Please ensure this is not lost, as their will be other children's pictures in their and some have image consents.



Festivals & Culture

At pre-school we celebrate diversity and promote inclusion, celebrating different festivals that our families enjoy, these include Christian, Muslim, Chinese, Vietnamese, Indian and other faiths.

Please speak to us if you celebrate a particular event or festival, and we can include this.

Understanding other faiths help children to value each other, sharing joy and learning about different cultures, building a sense of togetherness.



Upcoming Events

October

- Harvest Festival, Saturday 6th October
- Spooky Disco, Thursday 24th October, 4:15pm, - 5:15pm
- Grandparent Week, Monday 21st October to Friday 25th October, stay and play sessions



November

- Remembrance Day, Monday 11th November
- Nursery Rhyme Week (dress up), Monday 11th November to Friday 15th November
- Christmas Fair, Saturday 30th November



If you have not received a letter, do not worry as we will eventually be sending these events out via letters. December events & dates, will be shared closer to the time with information.



Important Messages

- Please can we ask that parents/ carers do not park in the car park unless you have a prior agreement in place for dropping off a disabled child, the school have asked you do not enter the car park.
- Please do not park on the zig zag lines and the grass verge outside the grass area to the left of the gate, as this is blocking the entrance to the car park and is a danger to children.
- Please only press the pre-school buzzer at the gate when entering, not Thornden Woods Primary School buzzer unless you are here for them.
- **If your child or their sibling is eating on arrival or collection, please ensure that they do not walk into the preschool setting eating, as crumbs fall off and is sometimes dropped which presents further risk, and we have severe allergies.**
- Please always check your child's bag for important letters, updates from us.



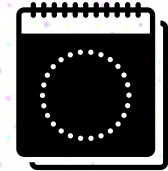
Half Term Week

Please note, this year Thornden Woods Primary School will be closed for two weeks from Monday 21st October to Friday 1st November in line with Herne Bay High School.

We will be open the week of Monday 21st October so please bring your child in, our calendar differs slightly to the school's, but we have to follow the funding calendar provided by Kent County Council.

If you need any ideas for holiday clubs, please ask.

Please see on our website for term dates www.briarypreschool.co.uk



Uniform

Briary preschool uniform is available for all children any time of the year. If you would like to order any nearly new (from previous families, which have been washed) or new polo shirts, sweatshirts or fleeces, we have stock available.

New Uniform

New Polo shirt	£8.50
New Sweatshirt	£11.50
New Zipped Fleece	£14.00

Nearly New Uniform

Nearly New Polo shirt	£5.00
Nearly New Sweatshirt	£6.50
Nearly New Zipped Fleece	£7.50

Please note, for new uniform some sizes may not be available and as these have to be pre-ordered through our supplier, there may be a wait as we have to order more.

Please also remember some nearly new sizes may not be in stock as these are second hand, and we can only provide the uniform we have been provided.



Opening times

Briary Pre-School is open term time only - 38 weeks of the year. Please look at our term dates page under Information, to see our closures for staff development days, bank holidays and holiday periods.

Monday	8:30am - 3:30pm
Tuesday	8:30am - 3:30pm
Wednesday	8:30am - 3:30pm
Thursday	8:30am - 3:30pm
Friday	8:30am - 3:30pm

Lunch club runs between 11.30 am and 12.30 pm and is charged at £7.50 per house (Supervisory charge) Parents/ Carers provide their child with a packed lunch. Please visit our Funding and Fees page under Information to see more details.



Neighbourly- Aldi Donations

Since September 2022 we have been registered with a company called "Neighbourly" who has kindly offered us the weekly opportunity to Whitstable, redistribute surplus food which they donate to local charities.

Every Tuesday, Maria, Lucia or Nic go to Aldi at Whitstable, to pick up different food which varies each week for the pre-school and parents.

We also try to put donations outside our front door entrance to help families, so please help yourself.

We are very grateful for Aldi, donating a variety of different items each week which helps towards our cooking and snack provision, and families.



Fees

This is just a reminder that fees must be paid on time and in advance from your child attending the sessions. We are a charity run Pre-School and our only source of income is fees. You are welcome to pay via cash, cheque or bank transfer. Our Bank Account Details:

Lloyds Bank

Sort Code: 30-99-50

Account No: 17809463

If you have any questions or having any financial difficulties, please do not hesitate to contact Lucia Wells, our business and finance officer to discuss, Lucia is on maternity, but sometimes will come in to help out but if not please speak to Carol, the manager.

As per your parent agreement *Please note*- Unpaid fees could risk you losing your child's place at pre-school.



Phoneline

If you wish to call the pre-school during 11:30am- 1:30pm, we may not be able to answer the phone as the office staff cover lunch club whilst our key persons go for their lunch. Please leave a message and we will return your call.

If for general calls outside these times, we will try and answer as soon as possible but if we do not, we will give you a call back. If you do not get in touch with us, you can always email us at briarypreschool@btconnect.com.



Tapestry

This is our online learning journey through educational software called "Tapestry". You can access this from home by logging on at <http://eyli.org/login/> with your secure username and password and you will be able to view your child's progress through observations, photographs and videos from their time in Briary Pre-School. If you haven't got a Tapestry account, please get in contact with Maria and she will be able to set you up on Tapestry as you will be missing your child's progress.



TAPESTRY
ONLINE LEARNING
JOURNAL



Staff Team



Carol Smith
Pre-School Manager SENCO &
Designated Safeguarding Lead
(DSL) Early Years Leadership
and Management Professional
Development (20 Credits)



Nicola Wheeler
Deputy Manager
Designated Safeguarding Lead (DSL)
Health and Safety Officer & 2 Year Old
Advocate
Early Years Leadership and
Management Professional
Development (20 Credits)



Maria Wheeler
Office Administrator
Working towards Website Design
& Social Media Marketing



Lucia Wells
Business and Finance Officer
Level 6
BA Honours in Early Childhood
Studies
MA in Early Childhood Education



Chloe Knight
Ladybird Key Person
Deputy Team Leader
Early Years Practitioner
Level 3- Children and Young
Peoples Work Force
Health & Safety Assistant
Designated Safeguarding Lead
Assistant



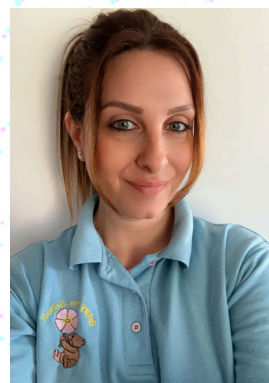
Claire Rocke
Dragonfly Key Person
Early Years Practitioner
NVQ Level 3



Quyen Tran
Honeybee Key Person
Early Years Educator Level 3
Early Years Practitioner Trainee



Alana Kember
Firefly Key Person
Early Years Educator Level 3
Early Years Practitioner Apprentice



Mel Dallas
Butterfly Key Person
Working towards Cache Level 3
Diploma in Early Years



Staff Team



Samantha Gambrell
Augmented Support/ Cover Staff



Jessica Jno Baptise
Cover Staff



Sarah Littlewood
Practitioner - Cover Staff/
Augmented SEND Support



Freya Gillibrand
Augmented Support/ Cover
Staff

Please see next page for our term dates.

**If you would like any information about Briary
Pre-School, visit our website
www.briarypreschool.co.uk**



Staff Team

Briary Pre-School Term Dates 2024-25

We offer funded pre-school education and open for 38 weeks of the year (190 days). Term time only from 8.30am - 3.30pm.
Our lunch club hour (11.30am-12.30pm) is not offered as part of the funded entitlement and is charged £7.50 per hour*

M	T	W	T	F	S	S
						1
2	3	4	5	6	7	8
9	10	11	12	13	14	15
16	17	18	19	20	21	22
23	24	25	26	27	28	29
30						

M	T	W	T	F	S	S
	1	2	3	4	5	6
7	8	9	10	11	12	13
14	15	16	17	18	19	20
21	22	23	24	25	26	27
28	29	30	31			

M	T	W	T	F	S	S
				1	2	3
4	5	6	7	8	9	10
11	12	13	14	15	16	17
18	19	20	21	22	23	24
25	26	27	28	29	30	

M	T	W	T	F	S	S
						1 Mon 14
2	3	4	5	6	7	8 Tues 14
9	10	11	12	13	14	15 Weds 14
16	17	18	19	20	21	22 Thurs 14
23	24	25	26	27	28	29 Fri 14
30	31					

M	T	W	T	F	S	S
		1	2	3	4	5
6	7	8	9	10	11	12
13	14	15	16	17	18	19
20	21	22	23	24	25	26
27	28	29	30	31		

M	T	W	T	F	S	S
					1	2
3	4	5	6	7	8	9
10	11	12	13	14	15	16
17	18	19	20	21	22	23
24	25	26	27	28		

M	T	W	T	F	S	S
					1	2
3	4	5	6	7	8	9
10	11	12	13	14	15	16
17	18	19	20	21	22	23
24	25	26	27	28	29	30
31						

M	T	W	T	F	S	S
	1	2	3	4	5	6 Mon 12
7	8	9	10	11	12	13 Tues 12
14	15	16	17	18	19	20 Weds 12
21	22	23	24	25	26	27 Thurs 12
28	29	30				Fri 12

M	T	W	T	F	S	S
			1	2	3	4
5	6	7	8	9	10	11
12	13	14	15	16	17	18
19	20	21	22	23	24	25
26	27	28	29	30	31	

M	T	W	T	F	S	S
						1
2	3	4	5	6	7	8
9	10	11	12	13	14	15
16	17	18	19	20	21	22
23	24	25	26	27	28	29
30						

M	T	W	T	F	S	S
	1	2	3	4	5	6
7	8	9	10	11	12	13
14	15	16	17	18	19	20
21	22	23	24	25	26	27
28	29	30	31			

M	T	W	T	F	S	S
				1	2	3 Mon 11+1
4	5	6	7	8	9	10 Tues 12
11	12	13	14	15	16	17 Weds 12
18	19	20	21	22	23	24 Thurs 12
25	26	27	28	29	30	Fri 12

- Local Authority Funded Sessions
- Non funded sessions (Pre-school Closed)
- Bank Holidays (Pre-school Closed)
- Give back day Tuesday for the Monday Children ONLY
- Pre-school Educational Visit (Funded day)

